



IMMULITE 2000 XPi Immunoassay System

Maximize Your Laboratory's Potential



Find it at fisherhealthcare.com



How will a broad menu, proven reliability, and simplification maximize your potential?

The IMMULITE® 2000 XPi Immunoassay System combines allergy and specialty testing with routine immunoassay testing. It features a wide-ranging menu, along with advanced software and hardware to handle nearly all the immunoassay testing challenges that laboratorians face.

The IMMULITE 2000 XPi system is a continuous, random access analyzer with a throughput of up to 200 tests per hour. Its proven reliability and software simplification allows laboratories to maximize their testing capacity.

Simplified Software

Enhanced software improves operator efficiency and increases walk-away time.

- Intuitive user interface with touch-screen access to streamline everything from remote test ordering to sophisticated analyses of results
- AutoStart capability allows you to:
 - Schedule daily maintenance to run automatically
 - Keep the instrument in a “ready-to-run state”
 - Run controls on demand, or at preselected times
- User-configurable, auto-dilution and reflex testing function meets individual testing needs
- Consumable Checklist enables preloading of the system based on the average tests run for a given day/time

Advanced Performance Features

- Auto Rack Loading allows sample racks to be placed on the system without pausing the instrument. The system can also be configured to automatically eject a rack once all samples have been pipetted or resulted
- Tube-top Sample Cup capability enables the testing of small samples with minimal handling and no need to relabel
- 90 day on-board stability of reagents
- Direct water feed and automated waste disposal capabilities

Wide Menu of Esoteric and Routine Immunoassays

The IMMULITE 2000 XPi menu sets the standard with a complete menu of routine and esoterics and over 300 allergens.

Disease State Assays

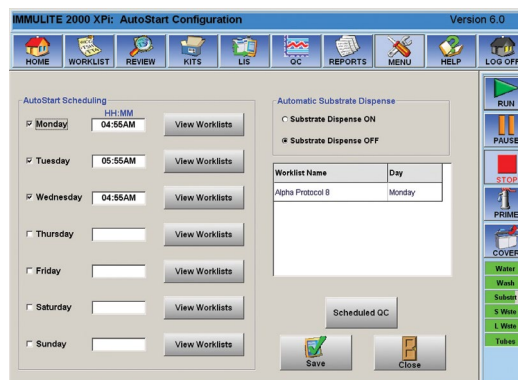
Allergy
Anemia
Autoimmune
Bone Metabolism
Cardiovascular
Diabetes
Growth
Hepatitis
Inflammation
Oncology
Metabolic Function
Special ID
Reproductive Endocrinology
Therapeutic Drug Monitoring (TDM)
Thyroid Function
ToRCH
Veterinary
Other Analytes

Innovations to enhance your potential.



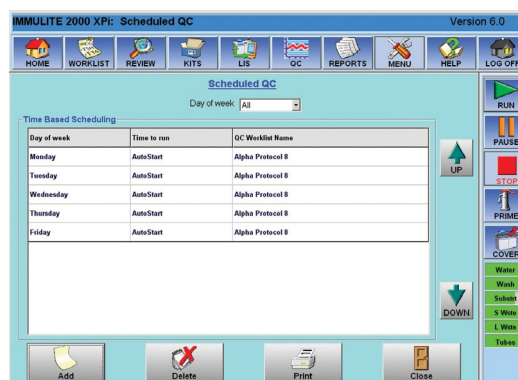
19-inch Touch-Screen Monitor

- Large display for better viewing at a distance
- Fewer keystrokes to simplify operations



AutoStart Maintenance

- Automates routine maintenance on demand or at convenient times



Scheduled QC

- Run QC on demand at pre-scheduled times to minimize disruption

Maximize productivity and improve workflow with your IMMULITE 2000 XPi Immunoassay System



Expand IMMULITE 2000 XPi system capabilities and connect to VersaCell System or VersaCell X3 Solution

The VersaCell® solutions connected to the IMMULITE 2000 XPi system are the perfect way to grow your testing capabilities as your needs expand:

- Provides robotic front-end sample transfer to and from the system
- Requires only one user interface and one LIS interface
- Reduces hands-on operations for increased walk-away capacity
- Allows each drawer to be accessed independently without interrupting sample processing



Maximize your workflow and productivity by adding:

- An ADVIA Centaur® XPT Immunoassay System for the most comprehensive infectious disease menu available
- A Dimension® EXL™ Integrated Chemistry System for simultaneous chemistry and immunoassay processing to increase workflow efficiency
- Siemens Healthineers automation and IT solutions to simplify your laboratory operations

At Siemens Healthineers, our purpose is to enable healthcare providers to increase value by empowering them on their journey toward expanding precision medicine, transforming care delivery, and improving patient experience, all enabled by digitalizing healthcare.

An estimated 5 million patients globally benefit every day from our innovative technologies and services in the areas of diagnostic and therapeutic imaging, laboratory diagnostics, and molecular medicine, as well as digital health and enterprise services.

We're a leading medical technology company with over 120 years of experience and 18,500 patents globally. With about 50,000 dedicated colleagues in over 70 countries, we'll continue to innovate and shape the future of healthcare.

The outcomes and statements provided by customers of Siemens Healthineers are unique to each customer's setting. Since there is no "typical" hospital and many variables exist (e.g., hospital size, case mix, and level of service/technology adoption), there can be no guarantee that others will achieve the same results.

On account of certain regional limitations of sales rights and service availability, we cannot guarantee that all products included in this brochure are available through the Siemens Healthineers sales organization worldwide. Availability and packaging may vary by country and is subject to change without prior notice. Some/All of the features and products described herein may not be available in the United States.

The information in this document contains general technical descriptions of specifications and options as well as standard and optional features, which do not always have to be present in individual cases.

Siemens Healthineers reserves the right to modify the design, packaging, specifications, and options described herein without prior notice.

Note: Any technical data contained in this document may vary within defined tolerances. Original images always lose a certain amount of detail when reproduced.

ADVIA Centaur, Dimension, EXL, IMMULITE, VersaCell, and all associated marks are trademarks of Siemens Healthcare Diagnostics Inc., or its affiliates. All other trademarks and brands are the property of their respective owners.

Contact your Fisher Healthcare representative to learn more.

Distributed by Fisher Healthcare. Contact us today:

In the United States

Order online: fisherhealthcare.com

Call customer service: 1-800-640-0640



© 2023 Thermo Fisher Scientific Inc. All rights reserved.

Trademarks used are owned as indicated at fishersci.com/trademarks.

BN235891460-US



siemens-healthineers.com

Published by Siemens Healthcare Diagnostics Inc.

Laboratory Diagnostics

Tarrytown, NY 10591-5005 USA